



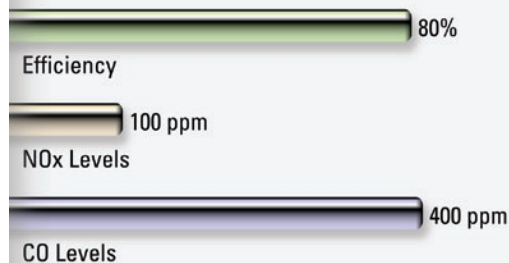
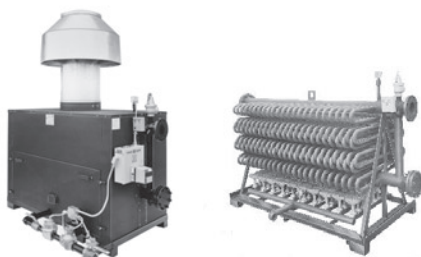
PARKER HOT WATER BOILER SUMMARY

Sizes, Efficiency, NOx and CO Levels
For Closed System Heating
Temperatures to 400°F, Pressures to 300 PSI

201

Atmospheric "T" Model Direct Fired Hot Water Boiler

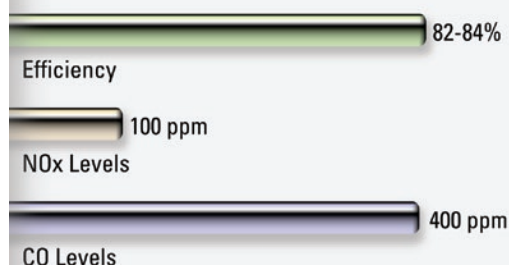
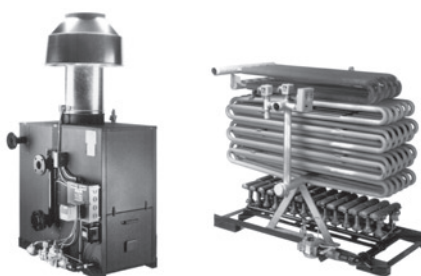
Units available from
300,000- 6,800,000 BTU input



201R with Internal Reclaimer

Atmospheric "T-R" Model High Efficiency, Direct Fired Hot Water Boiler

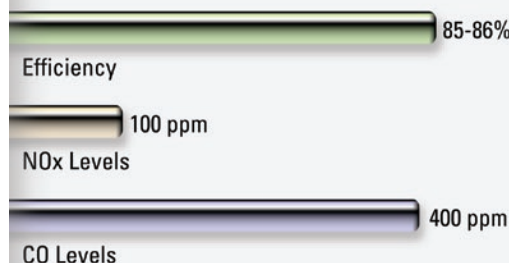
Units available from
300,000- 6,800,000 BTU input



201R with External Reclaimer

Atmospheric "T-R" Model High Efficiency, Direct Fired Hot Water Boiler

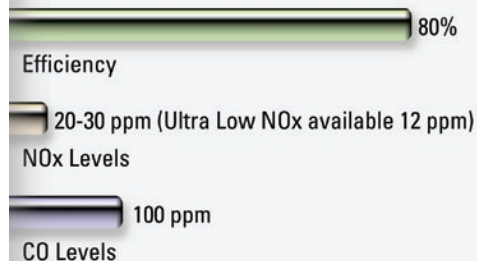
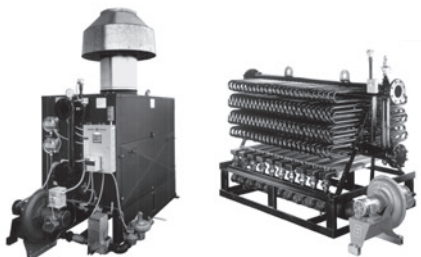
Units available from
300,000- 6,800,000 BTU input



201L

"T-L" Model Low NOx, Premix Burner, Direct Fired Hot Water Boiler

Units available from
300,000- 6,300,000 BTU input



For open systems or low temperature heating, use Parker Indirect Fired Water Heaters 210 Series.
Ratings and emission levels given are nominal and may vary based on job conditions.
CO values given are maximum. Normally, much lower values are obtained.

PARKER BOILER CO.

5930 Bandini Boulevard
Los Angeles, CA 90040
Tel (323) 727-9800
Fax (323) 722-2848
www.parkerboiler.com

BROCHURE Hot Water Summary 0J5

"Never a Compromise for Quality or Safety"



PARKER HOT WATER BOILER SUMMARY

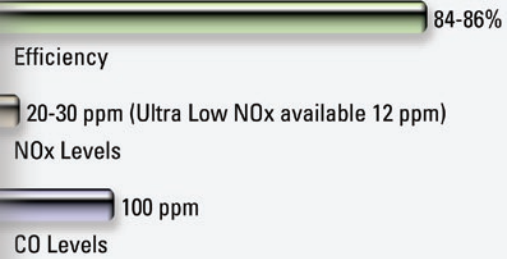
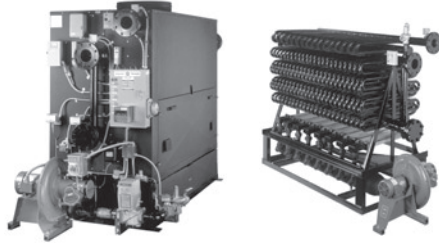
Sizes, Efficiency, NOx and CO Levels
For Closed System Heating
Temperatures to 400°F, Pressures to 300 PSI



201LR with Internal Reclaimer "T-LR" Model

Low NOx, High Efficiency,
Premix Burner,
Direct Fired Hot Water Boiler

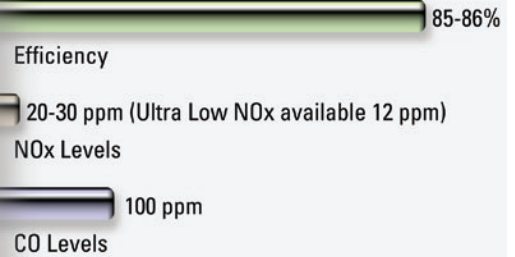
Units available from
300,000- 6,300,000 BTU input



201LR with External Reclaimer "T-LR" Model

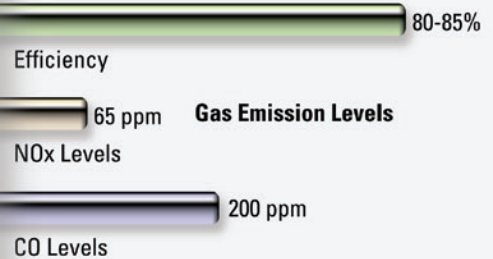
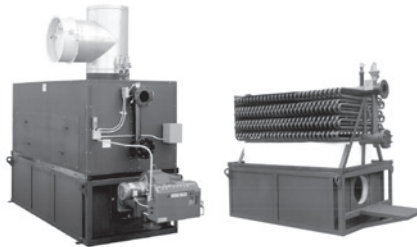
Low NOx, High Efficiency,
Premix Burner,
Direct Fired Hot Water Boiler

Units available from
300,000- 6,300,000 BTU input



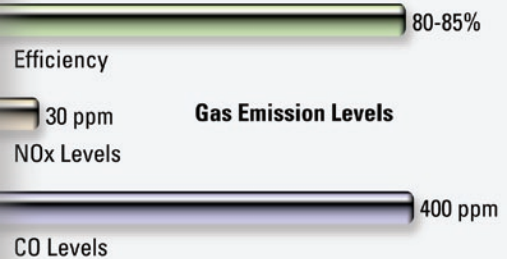
203-5 Power Burner Hot Water Boiler Gas (G), Oil (O), or Gas/Oil (G/O) Fuels

Units available from
432,000- 6,250,000 BTU input



203-5 Power Burner Hot Water Boiler Gas (G), Oil (O), or Gas/Oil (G/O) Fuels Low NOx Firing w/FGR

Units available from
1,000,000- 6,250,000 BTU input



For open systems or low temperature heating, use Parker Indirect Fired Water Heaters 210 Series.
Ratings and emission levels given are nominal and may vary based on job conditions.
CO values given are maximum. Normally, much lower values are obtained.



"Never a Compromise for Quality or Safety"

PARKER BOILER CO.
5930 Bandini Boulevard
Los Angeles, CA 90040
Tel (323) 727-9800
Fax (323) 722-2848
www.parkerboiler.com

BROCHURE Hot Water Summary 0J5

Parker Hot Water Boiler Summary