



POWER BURNER WATER WALL HOT WATER BOILER

G---R Models, Bent Steel Water Tube

500,000 - 3,080,000 BTUH

Power Gas Fired, Light Oil or Combination

204WW Direct Fired Hot Water Wall Boiler

Temperatures to 380°F
Pressures to 200 PSI

THE PARKER DESIGN

The Parker water tube design offers an extremely efficient, reliable hot water boiler built for the long term with ease of maintenance. The Parker design offers many advantages. Compare ours to the competition.

ADVANTAGES

- Sealed combustion chamber offers efficiencies to 86% with low excess air levels.
- Less heat loss due to Water Wall sealed combustion chamber design.
- Flexible tubes, no thermal shock problems.
- Extra heavy boiler tubes 1-5/16" OD, minimum 0.12" (11GA) heavy thickness steel, built for long term service life.
- Welded tube bundle. No rolled, ferrill fit, or gasket type connections.
- Units up to 3,080,000 BTUH can go through a 35" door.
- Qualifies for Type "B" conventional venting on gas.
- Modular cabinet construction.
- Lighter weight.
- Multiple burner options including Ultra Low NOx

Safety

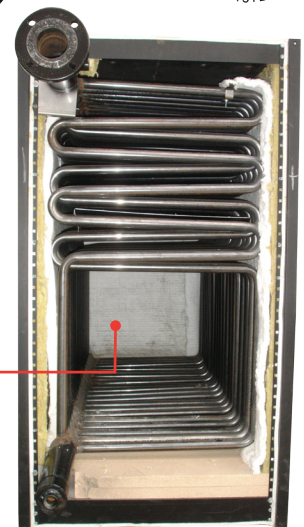
Our ASME tube bundle is extremely flexible and offers a long life with a 25 year warranty against thermal shock. No Parker Boiler has ever been known to experience an internal explosion.

Low Cost Operation

The staggered tubing design provides a 10-pass self-baffled heating surface to increase efficiency

PARKER BOILER CO.

5930 Bandini Boulevard
Los Angeles, CA 90040
Tel (323) 727-9800
Fax (323) 722-2848
www.parkerboiler.com
BROCHURE 204-IV-VI 0J9



Water Wall Furnace

Codes / Approvals

All Parker Hot Water Boilers are manufactured in accordance with the ASME Heating & Power Boiler Codes, and registered with the National Board of Boiler and Pressure Vessel inspectors. The boiler, burner and controls are prewired, factory tested and Listed by a Nationally Recognized Testing Laboratory as Gas, Oil or Combination Gas/Oil Fired Boiler Assemblies to UL Standard 795 & CAN/CGA STD 1-3.1. Oil Fired boilers are Listed per UL 726.

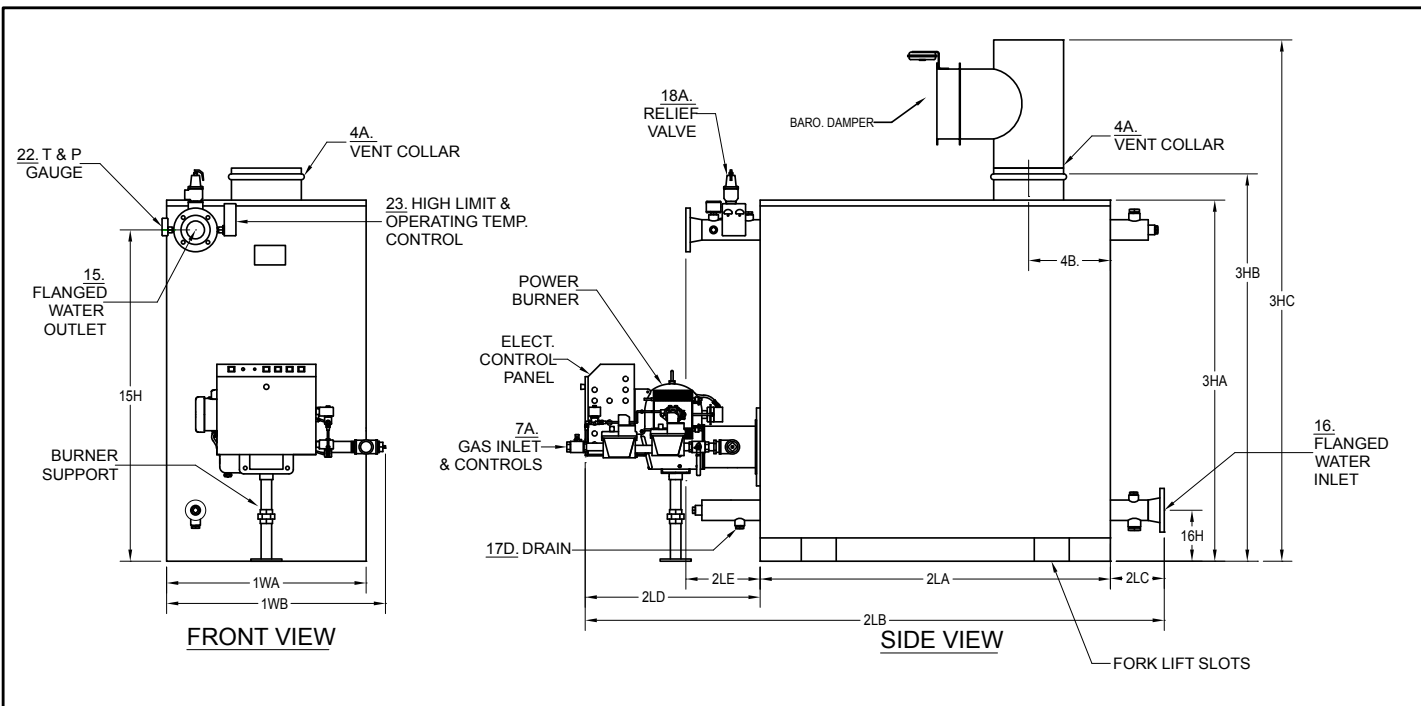
Heavy Insulated Cabinet

The cabinet is durably constructed with heavy steel, insulated with high temperature thermal fiber insulation to effectively reduce heat losses to a minimum.

"Never a Compromise for Quality or Safety"



**PARKER BOILER WATER WALL HOT WATER BOILERS
POWER GAS, OIL, COMBINATION OR LOW NO_x FIRED
MODELS G672R TO G3120R**



NO.	ITEM	" * " = G(gas), O (oil), GO (gas oil comb) MODEL NO.	*672R	*1008R	*1536R	*2304R	*2640R	*3120R	
A	BTU Input	1000's BTU/HR.	500	1008	1536	2000	2500	3080	
B	BTU Output	1000's BTU/HR.	410	827	1260	1640	2050	2525	
C	Heating Surface	SQ. FT.	93	140	187	234	294	358	
1WA	Width of Cabinet	IN.	35	35	35	35	35	35	
1WB	Width Overall Including Controls (controls can be removed)	IN.	40	40	42	42	44	44	
2LA	Length of Cabinet	IN.	32	47	56	68	83	101	
2LB	Length Overall	IN.	72-1/2	85-1/2	100	111-1/2	126-1/2	144	
2LC	Length of Back Header Flange Beyond Cabinet	IN.	9-1/2	7-1/2	9-1/2	9	9	8-1/2	
2LD	Length of Burner Beyond Cabinet	IN.	31	31	34-1/2	34-1/2	34-1/2	34-1/2	
2LE	Length of Front Header Beyond Cabinet	IN.	13	13	13	13	14	14	
3HA	Height of Cabinet	IN.	62	62	62	62	62	62	
3HB	Height with Vent Collar	IN.	66-1/2	66-1/2	66-1/2	66-1/2	66-1/2	66-1/2	
3HC	Height Overall Including Barometric Damper	IN.	81	84	88	90	92	96	
4A.	Vent Collar Diameter	IN.	8	10	12	14	16	18	
4B.	Vent Stack Location - From Rear of Boiler Cabinet	IN.	12	17-1/2	18-1/2	23	26	30	
7A	Std. Nat. Gas Inlet Size, @ Inlet Supply Pressure; Min: 7" W.C.; Max: 14" W.C.	IN.	1	1-1/4	1-1/2	1-1/2	2	2	
7B	Hi Pressure Natural Gas or LP Gas Inlet Size, Supply Pressure 1-5 PSI	IN.	1	1	1-1/2	1-1/2	1-1/2	2	
8A	Oil Input Required @ Manuf.'s Capacity Rating (#2 Oil)	GPH.	3.5	7	10.5	14.5	17.5	22	
8B	Oil Supply Line Size - Minimum for up to 30'	IN.	3/8	1/2	3/4	3/4	3/4		
15 & 16	Hot Water Inlet & Outlet Size (CL. 150 Flanged)	IN.	3	3	3	3	3	3	
15H	Hot Water Outlet Height from Floor	IN.	57	57	57	57	57	57	
16H	Water Inlet height from Floor	IN.	8-3/4	8-3/4	8-3/4	8-3/4	8-3/4	8-3/4	
17D	Drain Line Size Required	IN.	1	1	1	1	1	1	
18AHP	Safety Relief Valve Size - 125 PSI (H-STAMP)	OUTLET IN.	3/4	3/4	1	1	1	1-1/4	
18ALP	Safety Relief Valve Size - 30 PSI (H-STAMP)	OUTLET IN.	1	1-1/2	2	2	2-1/2	2-1/2	
20A	POWER SPECIFICATIONS	VOLTAGE/Ph	115V/1Ph						230V/3Ph
20B	Controls (115V-1Ph-60Hz)	AMPS	5 AMPS						
21	Blower HP - *G (gas)	HP	1/3	1/3	1/2	1/2	3/4	1	
	Water Capacity	GAL.	16	22	29	35	43	56	
	Net Weight of Boiler	LBS.	1440	1685	2015	2350	2800	3450	
	Crated Shipping Weight of Boiler- Approximate	LBS.	1640	1935	2290	2650	3130	3900	

Recommended Clearances for Access: Inspection Doors 18"; Controls 24"; Electrical Panel 30"; 3Ph (36") ; Additional space may be required by Local Codes.

Notes: Due to continuous improvement, specifications are subject to change without notice.



"Never a Compromise for Quality or Safety"

PARKER BOILER CO.
 5930 Bandini Boulevard
 Los Angeles, CA 90040
 Tel (323) 727-9800
 Fax (323) 722-2848
 www.parkerboiler.com
 BROCHURE 204-IV-VI 0J9