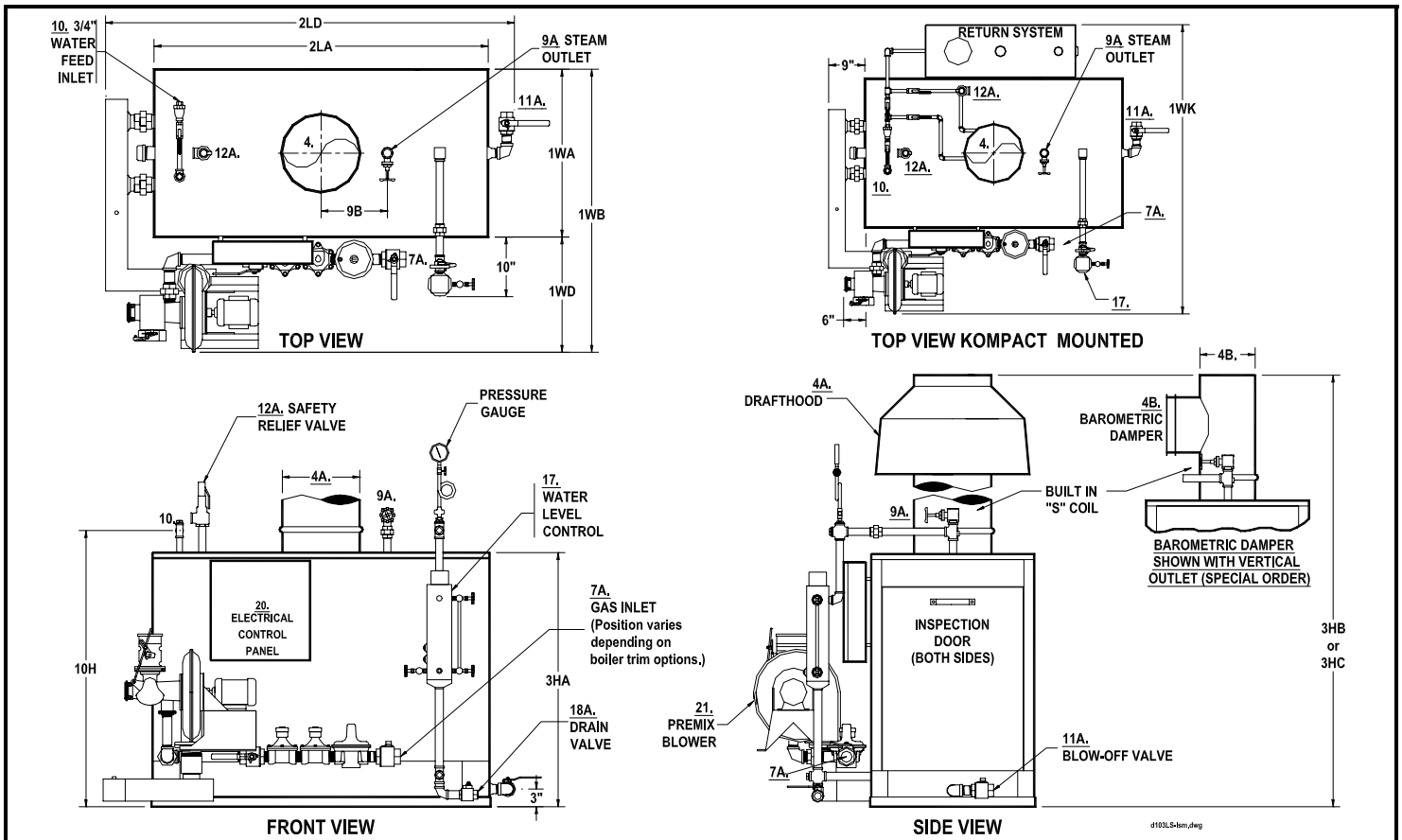


PREMIX METAL FIBER LOW NOx
PARKER GAS FIRED STEAM BOILERS
MODELS 9.5L TO 25L – SIDE MOUNTED MANIFOLD W/ BUILT IN "S" COIL

SPEC. SHEET D-103LS-ISM
OK4



NO.	MODEL NO. / HORSEPOWER	9.5L / 9.5	15L / 15	20L / 20	25L / 25**	
A	BTU Input	1000's BTU/HR.	398*	645	860	1075
B	BTU Output at rating from and at 212°F	1000's BTU/HR.	326	529	705	882
C	Heating Surface	SQ.FT.	68	82.5	106	132
D	Rated Steaming Capacity from and at 212°F	LBS./HR.	335	545	726	908
1WA	Width of Cabinet	IN.	24	27	30	36
1WB/1WK	Width Overall / Width Overall w/Kompact Mounting	IN.	44 / 54	47 / 57	51 / 64	58 / 71
1WD	Width of Premix Blower Beyond Cabinet	IN.	20	20	21	22
2LA	Length of Cabinet	IN.	53	53	61	62
2LD	Length Overall	IN.	67	67	76	74
3HA	Height of Cabinet Only	IN.	42	42	46	46
3HB	Height Overall Including Draft Hood (Std)	IN.	74	76	82	82
3HC	Height Overall Including Barometric Damper (Vert./Horiz Outlet) (Special Order)	IN.	61/59	64/61	68/65	72/68
4A	Vent Stack Diameter with Draft Hood (Std)	IN.	10	12	14	14
4B	Vent Stack Diameter with Barometric Damper (Special Order)	IN.	8	10	10	12
7A	Std. Nat. Gas Inlet Size @ Inlet Supply Pressure; Max.: 14" WC; Min.: 7"WC	IN.	3/4	1	1-1/2	1-1/2
7B	Hi Press. Nat. Gas or LPG Gas Inlet Size Supply Press. 1-5 PSI	IN.	3/4	3/4	1-1/2	1-1/2
9A HP	Steam Valve Size – High Pressure 60 to 250 PSI	IN.	1	1	1	1-1/4
9 LP	Steam Outlet Size – Low Pressure 15 PSI or less – (Special Order)	IN.	2	2	2	2-1/2
9B	Steam Outlet Location – From Center of Boiler	IN.	9	9	12	12
10H	Water Height From Floor	IN.	45	45	50	50
11A	Blow-off Valve Size	IN.	1	1	1-1/4	1-1/4
12A	Saf. Valve Drain Size – High Press., 100 PSI Std. / (15 PSI "H" Stamp Spec. Order)	IN.	1 / (1-1/2)	1 / (1-1/2)	1-1/4 / (1-1/2)	1-1/4 / (2)
18	Water Column Drain Valve Size	IN.	3/4	3/4	1	1
20A	Power Specifications (# of Services required, for Blower & Pump), Starters Provided on Panel For Blower & Pump		2		2	
20B	Boiler Feed Pump, HP, Voltage, & Phase Depends on Boiler Pressure (See Parker Spec. Sheet D-106-C)					
20C	Controls (115V-1Ph-60Hz) (Transformer Provided if Required)		5 AMPS			
21	Premix Blower HP	HP	1/3			
J	Net Weight of Boiler	LBS.	1080	1270	1680	1945
L	Domestic Crated Shipping Weight of Boiler	LBS.	1235	1430	1860	2175
K	Same with Return System	LBS.	1525	1720	2215	2530

MINIMUM CLEARANCES TO COMBUSTIBLE CONSTRUCTION: Cabinet Sides & Rear 12"; Cabinet Top 48"; Draft Hood Vent Connector 6"; Barometric Damper Chimney Connector 12"

Recommended Clearances for Access: Inspection Doors 18"; Controls 24"; Electrical Panel 30"; Additional Space may be required by Local Codes

**23 H.P. available with same dimensions as 25 H.P. except: 995MBTU/Input; 796MBTU/Output; 793 Lbs./Hr.

Note: Due to continuous improvements, specifications are subject to change without notice.