



KOMPACT INDUSTRIAL PACKAGED STEAM BOILER

With Boiler Return System Mounted

1-1/2 to 25 HP Gas Fired

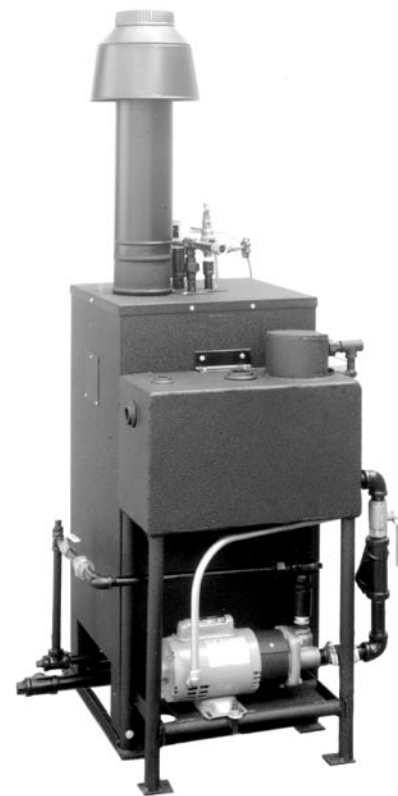
103 Steam Boilers 1-1/2 to 25 HP

KOMPACT MOUNTING INCLUDES MOUNTING, PIPING & WIRING OF RETURN SYSTEM TO BOILER.

Another fine Parker Packaged Boiler product to save valuable floor space, installation time and expense

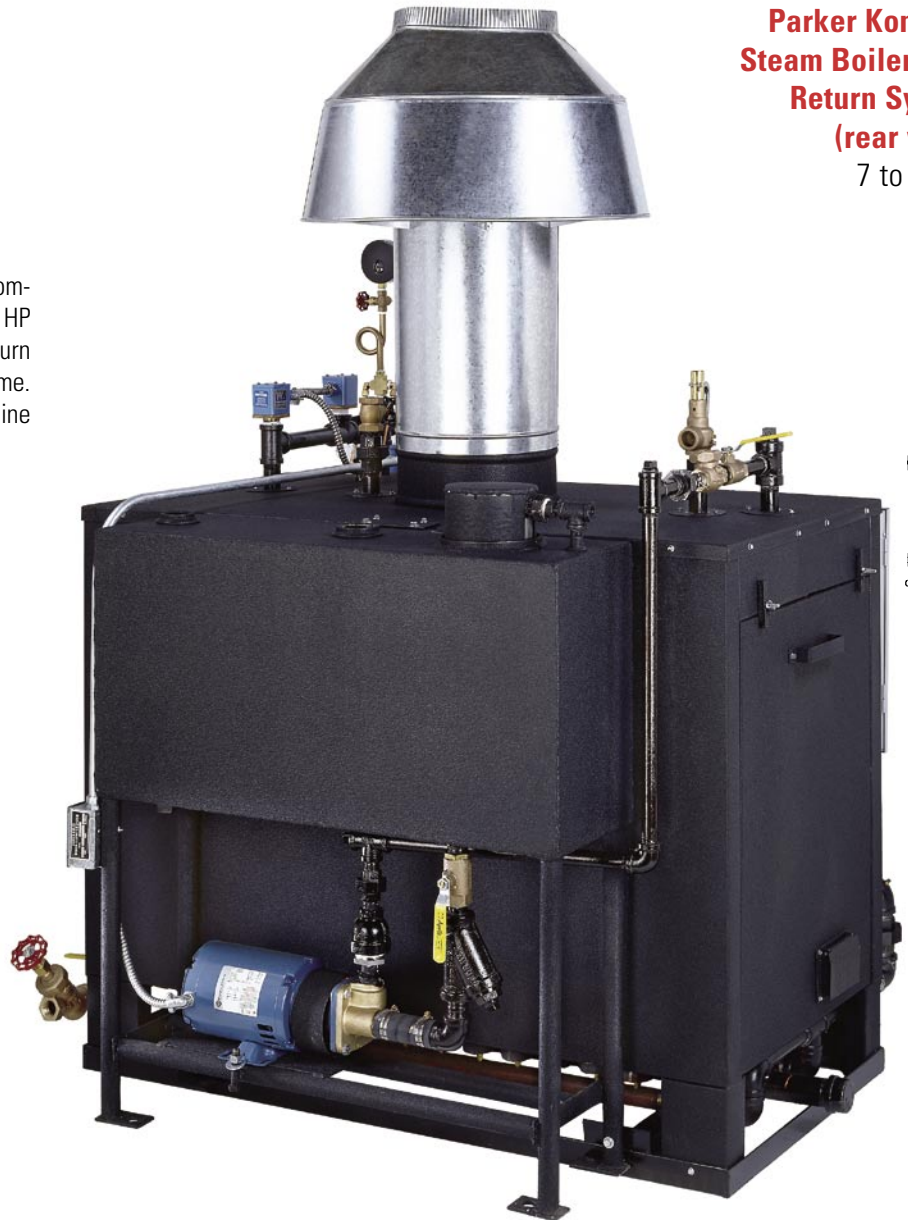
The Kompact option is available and recommended with steam boilers 1-1/2 to 25 HP to provide a fully packaged boiler with return system durably mounted to the boiler frame. Pump mounted, wired and water feed line piped – ready to install.

Parker Kompact (rear view)
1-1/2 to 3 HP



Parker Kompact Steam Boiler with Return System (rear view)

7 to 25 HP



PARKER BOILER CO.
5930 Bandini Boulevard
Los Angeles, CA 90040
Tel (323) 727-9800
Fax (323) 722-2848
www.parkerboiler.com
BROCHURE 103 0H3

"Never a Compromise for Quality or Safety"



PARKER KOMPACT

With Boiler Feed System Mounted

1-1/2 to 25 HP Gas Fired

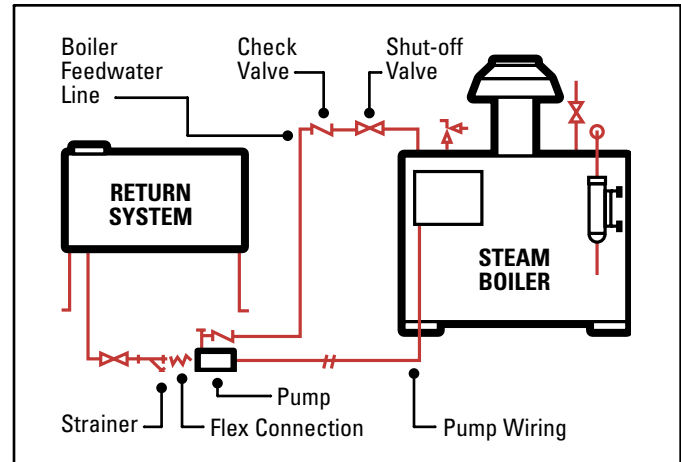


KOMPACT MOUNTING INCLUDES MOUNTING, PIPING & WIRING OF BOILER FEED SYSTEM TO BOILER.

Assures a properly piped system completely factory fire tested

The piping components are all prefabricated and assembled on a production line at a small cost compared to individual assembly when necessary in the field. Specify the "Kompact" model when this packaged system is desired on new boilers 1-1/2 to 25 HP.

Kompact Piping Diagram



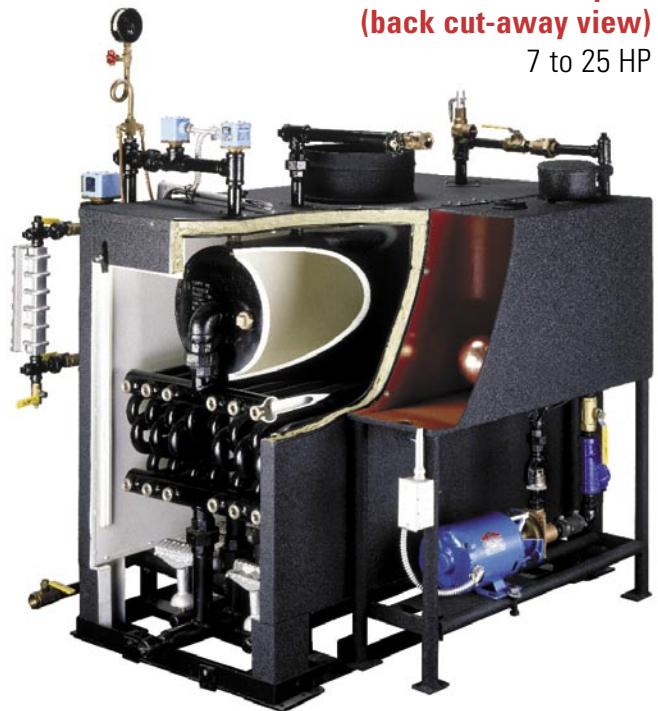
Parker Kompact (front cut-away view)

7 to 25 HP



Parker Kompact (back cut-away view)

7 to 25 HP



PARKER BOILER CO.
5930 Bandini Boulevard
Los Angeles, CA 90040
Tel (323) 727-9800
Fax (323) 722-2848
www.parkerboiler.com

BROCHURE 103 0H3



"Never a Compromise for Quality or Safety"