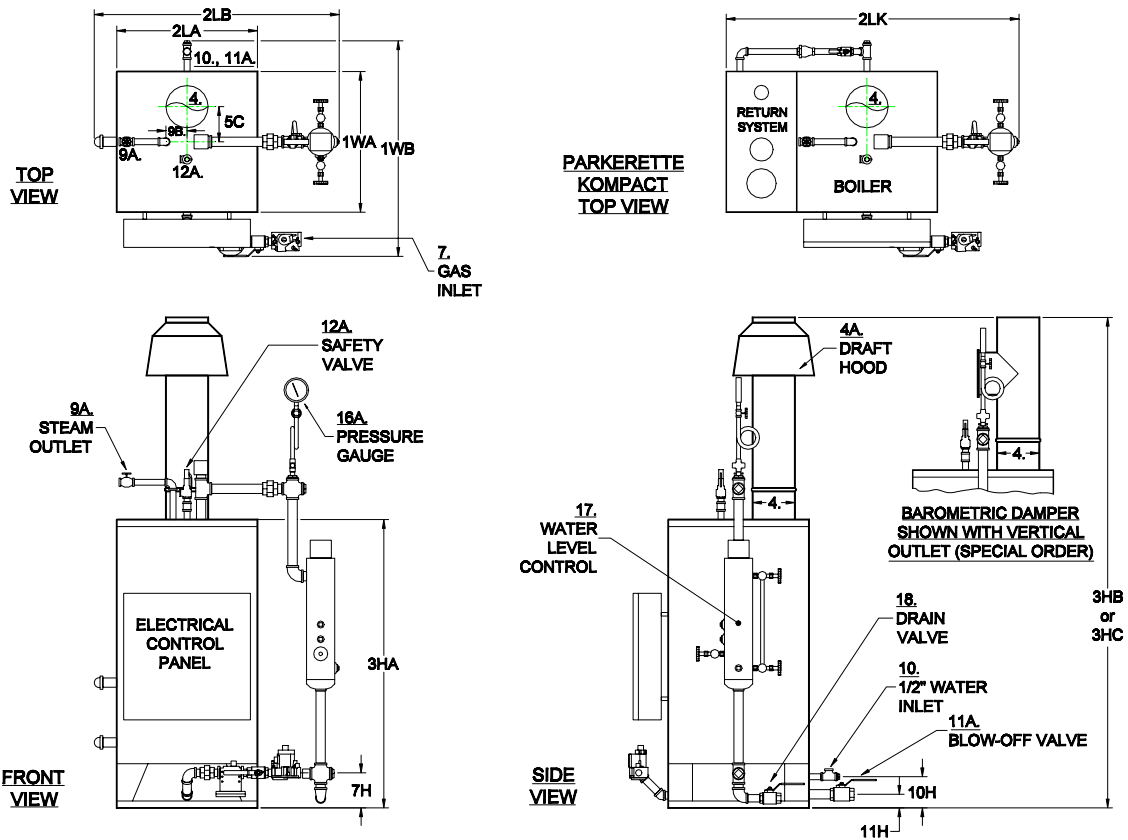


PARKERETTE VERTICAL DRUM STEAM BOILER  
1-1/2 TO 3 H.P. - ATMOSPHERIC GAS FIRED

SPEC. SHEET D-102-I  
7D



		MODEL NO.	102-1½	102-3	
NO.		HORSEPOWER	1½ HP	3 HP	
A	BTU Input	1000's BTU/HR.	65	129	
B	BTU Output at rating from and at 212°F	1000's BTU/HR.	52	104	
C	Heating Surface	SQ. FT.	16	19.9	
D	Rated Steaming Capacity from and at 212°F	LBS./HR.	52	104	
1WA	Width Cabinet Only	IN.	18	20	
1WB	Width Overall Including Controls	IN.	31	33	
2LA	Length of Cabinet Only	IN.	18	20	
2LB	Length Overall Including Controls	IN.	30	32	
2LK	Length Parker Kompact - Boiler With Return System	IN.	39	41	
3HA	Height of Cabinet Only	IN.	39	41	
3HB	Height Overall Including Draft Hood - (Standard)	IN.	66	69	
3HC	Height Overall Including Barometric Damper (Vert. Outlet/Horizont. Outlet) - (Spec. Order)	IN.	55 / 52	57 / 54	
4A	Vent Stack Diameter with Draft Hood - (Standard)	IN.	5	6	
4B	Vent Stack Diameter with Barometric Damper - (Special Order)	IN.	5	5	
5C	Vent Stack Location From Center	IN.	4-1/2	5	
7A	Gas Inlet Size - Standard Nat. Gas/ Supply Press. Min: 7" WC; Max: 14" WC	IN.	3/4	3/4	
7A1	Natural Gas Manifold Pressure at Burner	IN. WC	4	4	
7B	Gas Inlet Size - High Press. Nat. Gas & Propane Gas / Supply Press. 1-5 PSI	IN.	3/4	3/4	
7B1	Propane Gas Manifold Pressure at Burner	IN. WC	18	18	
7H	Gas Inlet Height From Floor	IN.	5	5	
9A HP	Steam Valve Size - High Pressure 60 to 250 PSI	IN.	1/2	1/2	
9 LP	Steam Outlet Size - Low Pressure 15 PSI or less - (Special Order)	IN.	1-1/4	1-1/4	
9B	Steam Outlet Location - From Center of Boiler	IN.	2	2	
10H	Water Inlet Height From Floor	IN.	5	5	
11A	Blow-off Valve Size	IN.	1	1	
11H	Blowdown Line Height From Floor	IN.	3	3	
12A HP	Safety Valve Drain Size - High Pressure - 100 PSI - Standard	OUTLET IN.	3/4	3/4	
12A LP	Safety Valve Drain Size - Low Pressure - 15 PSI ("H" Code)- (Special Order)	OUTLET IN.	3/4	3/4	
18	Water Column Drain Valve Size	IN.	3/4	3/4	
J	Net Weight Of Boiler	LBS.	370	440	
K	Domestic Crated Shipping Weight of Boiler	LBS.	440	515	
L	Same with Return System or Kompact Mounting	LBS.	625	700	
MINIMUM LISTED CLEARANCES TO COMBUSTIBLE CONSTRUCTION:		12"	48"	6"	12"
		Cabinet Sides & Rear	Cabinet Top	Draft Hood Vent Connector	Baro. Damper Chimney Connector
Recommended Clearances for Access: Inspection Doors 18"; Controls 24"; Electrical Panel 30"; Additional Space may be required by Local Codes					

Notes: All of the above dimensions are for a standard trim model. Due to continuous improvement, specifications are subject to change without notice.